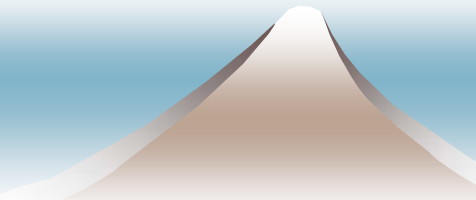


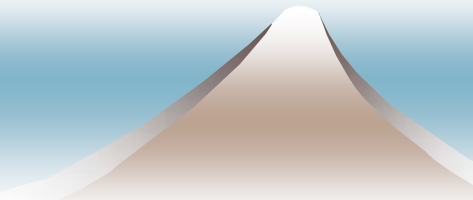
Introduction to the Japan's Forest and Forestry Today (part4:International Cooperation)

- ◆ 8 Mar. 2008
- ◆ At the Forest English Forum
 - ◆ By Fusho Ozawa PhD.



7. Japan is Cooperating in Various Ways to Help Conserve and Develop the World Forests.

- ◆ For more than forty years, Japan has been cooperated with partner countries for Sustained Forest Management by governments and non-government organizations.



The types of cooperation

- ◆ Project Type Technical Cooperation (by JICA)
- ◆ Demonstrative Research Project (by JICA)
- ◆ Developmental Study (survey & planning) (by JICA)
- ◆ Grant of Fund (by MFA)
- ◆ Loan of Fund (JBIC)



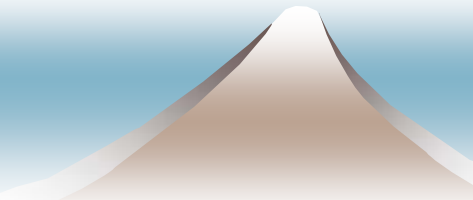
Project Type Technical Cooperation

- ◆ Field of the plantation in “Multi-storied Forest Management Project, Malaysia.
- ◆ System: Cut two rows of *A. mangium* (upper story) and plant two rows of *Shorea* spp as lower story.



Some slides which I have related in China

- ◆ An afforestation project in Ningxiahuizhu Autonomous Region (or Province) ; it started from the experimental stage and enlarged into Japanese Grant Aid Afforestation Project.



Ningxia, progress of desertification



Ninxia, extraction of salinity



Grant Aid Afforestation

Quadrangle sand stop by straw(方格沙障)



Grant Aid Afforestation in Ninxia



Japan-China cooperation experimental plantation project in Ninxia



Japanese grant aid afforestation project in Shanxi Province.

- ◆ Loess plateau and erosion



Horizontal ditch (over there) and fish scale hole(this side)



Horizontal ditch



Horizontal ditch work



Horizontal ditch work



Horizontal ditch work



Tree planting, Konotegashiwa

Oriental arborvitae (*Platycladus orientalis* Franco)



Growing of trees, 2004 planted

- ◆ Konotegashiwa, took photo 2007



Growing of trees, 2004 planted

- ◆ Harienju, Locust tree, *Robinia pseudoacacia*



June
2006
photo

An environmental afforestation project in Nei Mongol Autonomous Region (Japan China greening exchange funds project)

- ◆ Grassland in Nei Mongol



Planting trees in winter by Japanese NGO, in November, temperature about - 10



Conclusion

- ◆ For recovering the lost forest throughout the world, and for realizing enough supply of water and for prevention of global warming, promoting afforestation and nurturing of talented human power are indispensable
 - ◆ I wish to name this type of forest management “Pro - Social Forest Management”. I would continue to play my role in realization of this.
 - ◆ It would be greatly appreciated if my presentation would be of some use to the participants to stimulate the thinking for better forest management in the World.
- 